



## **HTMP-300**









*High Capacity Manual Prober*

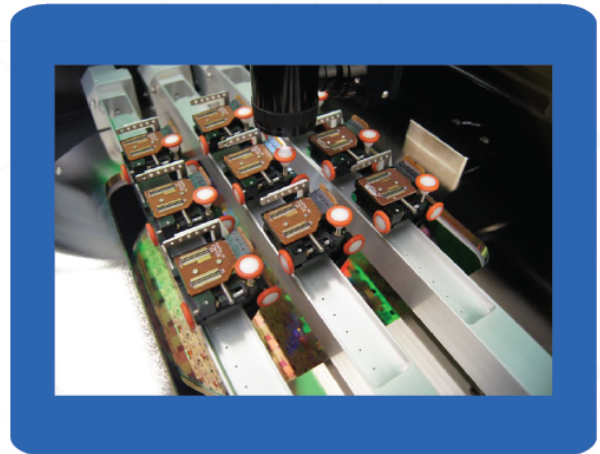


### **MULTI HEAD RAIL SYSTEM:**

This rail system delivers exceptional capacity, supporting up to 32 heads and enabling connectivity to as many as 1,280 pins in parallel. As a result, the HTMP-300 stands out as the only manual system on the market with this unparalleled capability.

#### **Characteristics:**

-  Fine adjustments for X, Y, Z, and Theta axes.
-  Vertical probe card configuration.
-  Air-cooled rail system.
-  Supports up to 32 heads.
-  Maximum of 40 pins per probe card.
-  Capable of operating at temperatures up to 350°C.
-  Flexible cable connectivity.
-  Optimized for high throughput.



Consult QualiTau for detailed specifications.

**TESTING THE FUTURE**

 SALES@QUALITAU.COM