







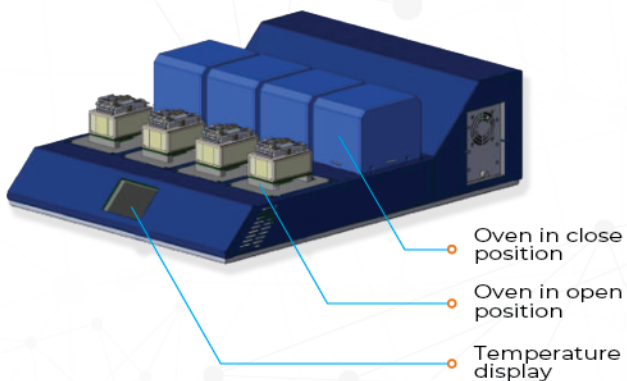
AGE²

Pulsed Electromigration System

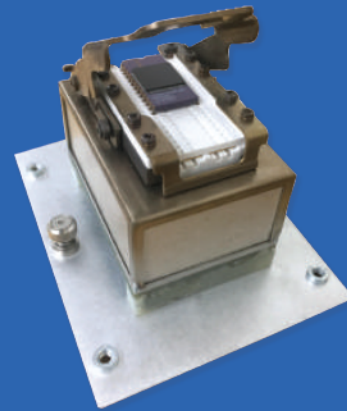


SYSTEM HIGHLIGHTS

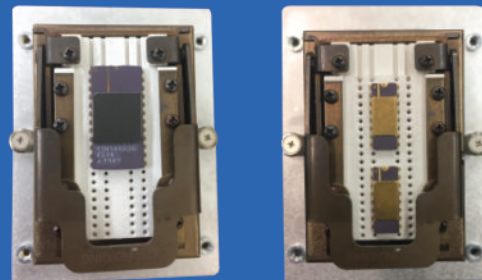
- 
DOUBLE DENSITY:
 16 DUTs. Two sources per 40-pin ZIF socket in any mode: DC, Unipolar AC and Bipolar AC
- 
 8 individual ovens per module, each with a 40-pin ZIF socket
- 
 Independent controls per oven including:
 - ◆ Stress frequency
 - ◆ Customizable stress duty cycle
 - ◆ Temperature range up to 350°C
 - ◆ 2 current sources
 - ◆ Swappable jumper cards
- 
 10MHz Capable
- 
 Independent computer per module
- 
 Compact desktop desing with rack-mount option for high capacity requirements



ZIF SOCKET CHARACTERISTICS



ZIF Socket provides easy load and un-load of packages



40 pin ZIF Socket allows for single or double package setups

Consult QualiTau for detailed specifications.

TESTING THE FUTURE