





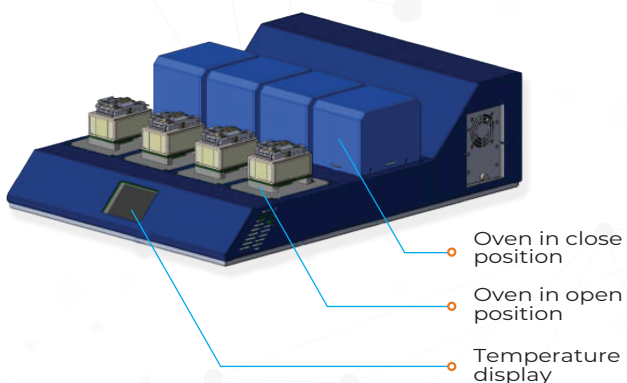


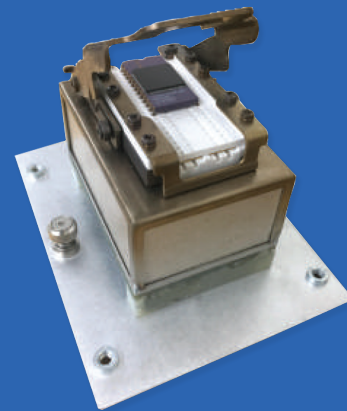


## SYSTEM HIGHLIGHTS

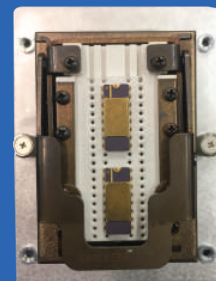
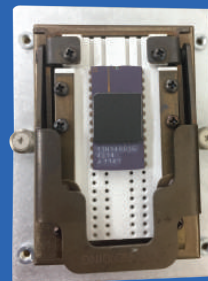
-  **DOUBLE DENSITY:**  
16 DUTs. Two sources per 40-pinZIF socket in any mode, DC, Unipolar AC and Bipolar AC
-  8 individual ovens per module, each with a 40-pinZIF socket
-  **DOUBLE DENSITY:**  
16 DUTs. Two sources per socket in any mode, DC, Unipolar AC and Bipolar AC
-  Independent controls per oven including:
  - ◆ Stress frequency
  - ◆ Customizable stress duty cycle
  - ◆ Temperature range up to 350°C
  - ◆ 2 current sources
  - ◆ Swapable jumper cards
-  Independent computer per module
-  Compact desktop design with rack-mount option for high capacity requirements



## ZIF SOCKET CHARACTERISTICS



ZIF Socket provides easy load and un-load of packages



40 pin ZIF Socket allows for single or double package setups

Consult QualiTau for detailed specifications.

**TESTING THE FUTURE**